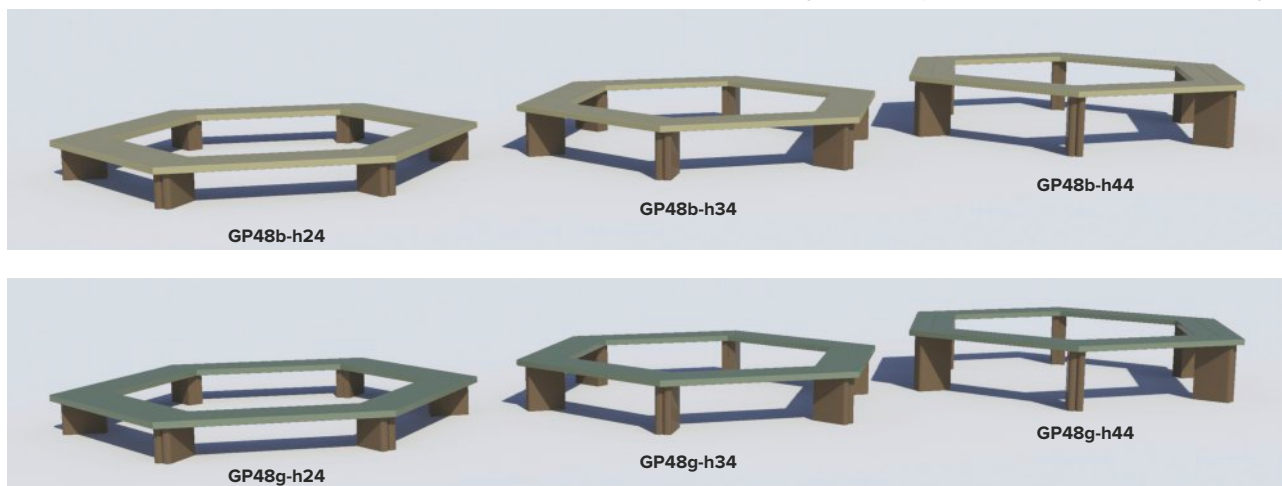


According to EN1176, this bed-bench is not considered as being a play equipment. Therefore, a TÜV-certificate is not required.

Outer diameter hexagonal 260 cm
Seat height = 30 cm (2 planks 4 x 15 cm with rounded edges)



Material

- Solid planks made of recycled plastic (PE), coloured throughout.
- Stainless steel screws and nail plugs

Mounting

The bench is delivered in 6 pre-assembled parts

Maintenance

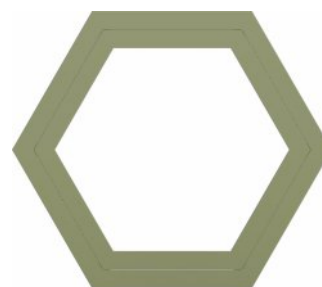
Maintenance of the recycled plastic material is very limited. Cleaning with a soapy water and a sponge or soft brush. Rinse with water to remove all dirt and soap. As the water absorption of the material is less than 0,29%, it will not get stained by oil, grease and other products. Besides, mosses and algae will have difficult to adhere to the material and are very easy to remove. Cleaning with high-pressure (max. 100 bar) is possible but is not recommended and mostly not needed. If anyway, then spray with a fan-shaped jet at minimum 30 cm from the plastic surface.

Painting or staining is useless as the paint will not stick attach to the material.

GP48b-h24 = height 24, planks beige
GP48g-h24 = height 24, planks green
+/- 81 kg

GP48b-h34 = height 34, planks beige
GP48g-h34 = height 34, planks green
+/- 96 kg

GP48b-h44 = height 44, planks beige
GP48g-h44 = height 44, planks green
+/- 111 kg

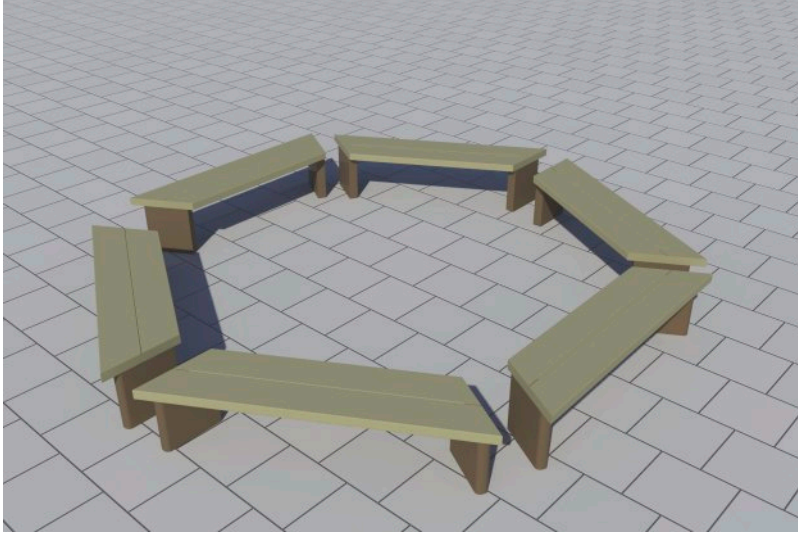


Assembling/Installation

The hexagonal bench GP48 is delivered in 6 pre-assembled benches. Anchorage is not required if supervision of the play area is guaranteed.

No need for safety zone and safety surfacing

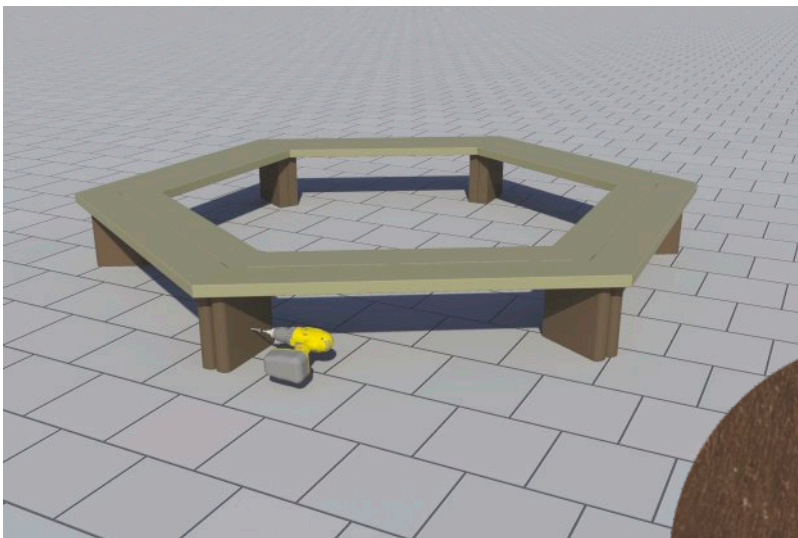
As a bench is not considered as being a play equipment, there is no need for a safety zone nor safety surface.



The bench legs are pre-drilled in order to assemble the complete bench.

The 6 benches are fixed together by means of the 12 included screws. The legs are pre-drilled.

Use a metal drill bit of 4 mm to pre-drill before screwing.



Stainless steel screws Torx 25

Anchorage

Anchorage is not necessarily needed on a school playground with supervision.

The hexagonal bench GP48 is anchored by fixing the brackets onto the bench legs and into the ground by means of screws and nail plugs. It is recommended to pre-drill the holes for the screws with a wood drill bit of 4 mm. Drill the holes for the nail plugs with a sharp masonry drill bit of 8 mm.

